

nevon Express™

# PRODUCT SPECIFICATIONS

Full colour controller series

**HD-WF4**

## 1. Overview

HD-WF4 (abbr. WF4) equipped with 4 lines HUB75E Port. It is a full colour series of control card. It supports Wi-Fi and U disk to update programs. It is suitable for door lintel led screens, store signboard screens, Vehicle-mounted screen and other occasions. Application software: HD2020 and LedArt (APP). The software interface is simple, the operation is convenient, and the rich display mode has the characteristics of low cost and high cost performance, and supports various full-colour led modules.

## 2. Features

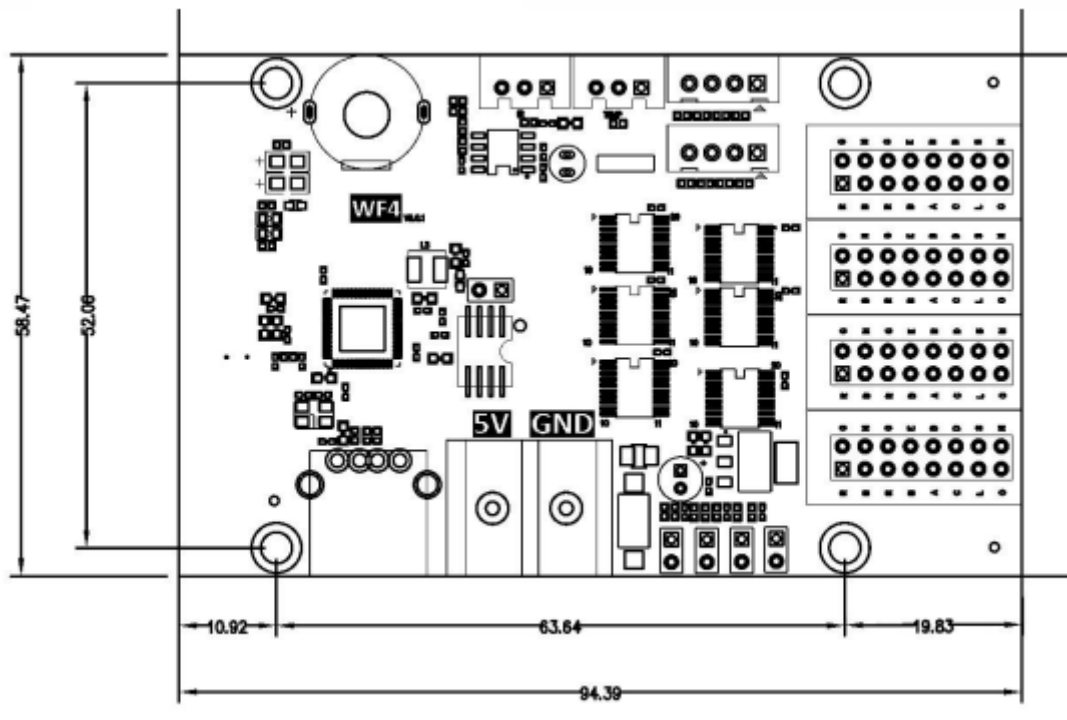
Functions	Description
<b>Support Module</b>	Support HUB75 port full colour module, support normal and ICN2038 IC
<b>Scan Mode</b>	Support static to 1/32S
<b>Control Range</b>	768*128, Widest 1280, Highest 256
<b>Communication Port</b>	Wi-Fi, U-Disk
<b>FLASH Capacity</b>	8M Byte
<b>Support RGB</b>	Full-colour module can display Red, Green, Blue, Yellow, Purple, White
<b>Grey Level</b>	8 level, support full colour text
<b>Program Quantity</b>	999 programs, support switch the program by wifi remote
<b>Area Quantity</b>	20 pcs areas with separate zone and separate special effects and border
<b>Display Showing</b>	Text, Animated word, 3D Word, Image & Text (Picture, SWF), Excel, Time, Temperature (humidity), Timing, Count, Lunar Calendar.
<b>Automatic Switch Screen</b>	Support timer switch machine
<b>Dimming</b>	Support brightness setting, time period brightness setting
<b>Power supply</b>	Micro USB, Standard 5V
<b>Certification</b>	CE, FCC, RoHS
<b>Wifi Password</b>	88888888

### 3. Port Definition

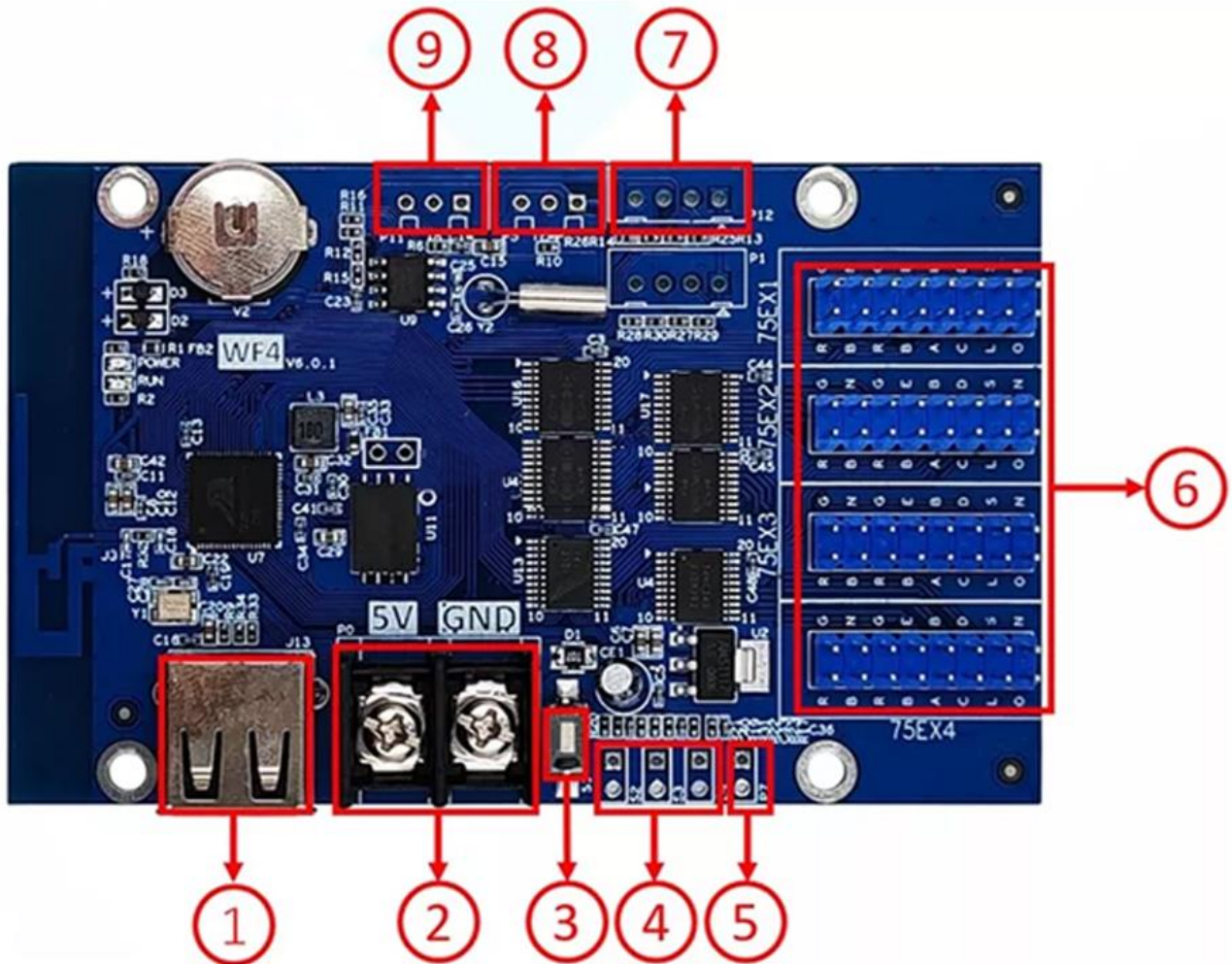
One HUB75E Port

RO	1	<b>H U B 7 5 E</b>	2	G0
B0	3		4	GND
R1	4		6	G1
B1	7		8	E
A	9		10	B
C	11		12	D
CLK	13		14	LATCH
OE	15		16	GND

### 4. Setup Diagram



## 5. Appearance Description



1. USB Ports, for updating programs by U-disk.
2. 5V Standard Power Connector, sharing with Micro-USB, can power to LED module directly.
3. Test Button, click to switch screen test status.
4. S2, Connect the point switch, switch to the next program, the timer starts, count plus.  
S3, Connect the point switch, switch the previous program, timer reset, count down.  
S4, Connect the point switch, program control, timing pause, count reset.
5. P7, Connect the brightness sensor.
6. HUB75E Port for connecting to LED Display.
7. P12, Connect PM2.5 or PM10 sensor
8. P5, Connect the temperature sensor
9. P11, Connect the IR, by remote control.

## 6. Basic Parameters

Parameters	Minimum Value	Typical Value	Maximum Value
Rated voltage (V)	4.2	5.0	5.5
Storage temperature (°C)	-40	25	105
Work Environment Humidity (°C)	-40	25	80
Work Environment Humidity (%)	0.0	30	95

## 7. Precautions

- ✚ To ensure that the control card is stored during normal operation, make sure the battery on the control card is not loose;
- ✚ In order to ensure the long-term stable operation of the system; please try to use the standard 5V power supply voltage.