



PRODUCT SPECIFICATIONS

Full colour controller series

HD-WF2

1. Overview

HD-WF2 (abbr. WF2) equipped with 2 lines HUB75E Port. It is a full colour series of control card. It supports Wi-Fi and U disk to update programs. It is suitable for door lintel led screens, store signboard screens, Vehicle-mounted screen and other occasions. Application software: HD2020 and LedArt (APP).The software interface is simple, the operation is convenient, and the rich display mode has the characteristics of low cost and high cost performance, and supports various full-colour led modules.

2. Features

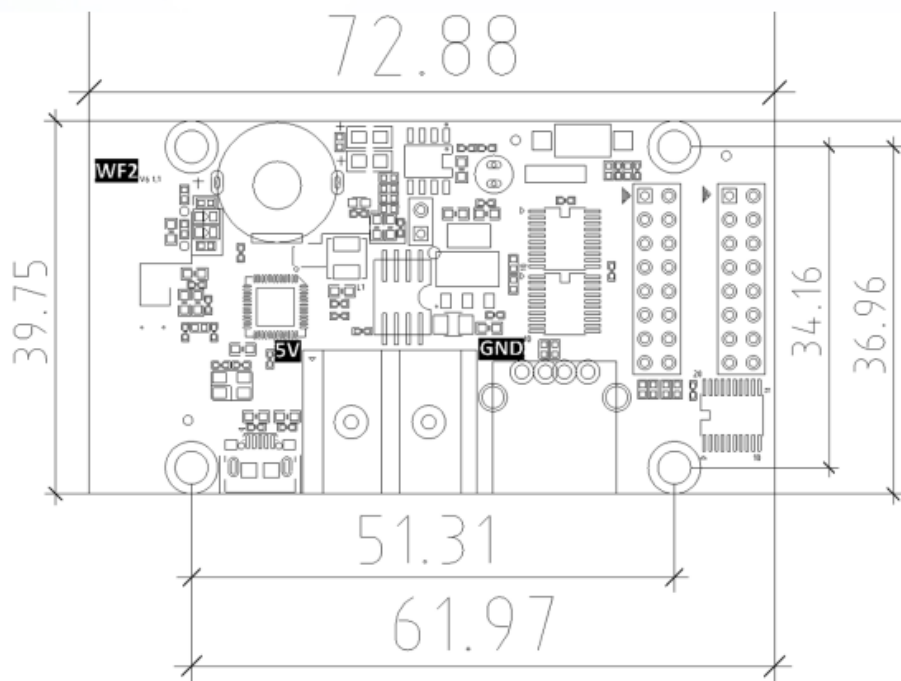
Functions	Description
Support Module	Support HUB75 port full colour module, support normal and ICN2038 IC
Scan Mode	Support static to 1/32S
Control Range	1280*32, 768*64, 384*128
Communication Port	Wi-Fi, U-Disk
FLASH Capacity	8M Byte
Support RGB	Full-colour module can display Red, Green, Blue, Yellow, Purple, White
Grey Level	8 level, support full colour text
Program Quantity	999 programs, support switch the program by wifi remote
Area Quantity	20 pcs areas with separate zone and separate special effects and border
Display Showing	Text, Animated word, 3D Word, Image & Text (Picture, SWF), Excel, Time, Temperature (humidity), Timing, Count, Lunar Calendar.
Automatic Switch Screen	Support timer switch machine
Dimming	Support brightness setting, time period brightness setting
Power supply	Micro USB, Standard 5V
Certification	CE, FCC, RoHS
Wifi Password	88888888

3. Port Definition

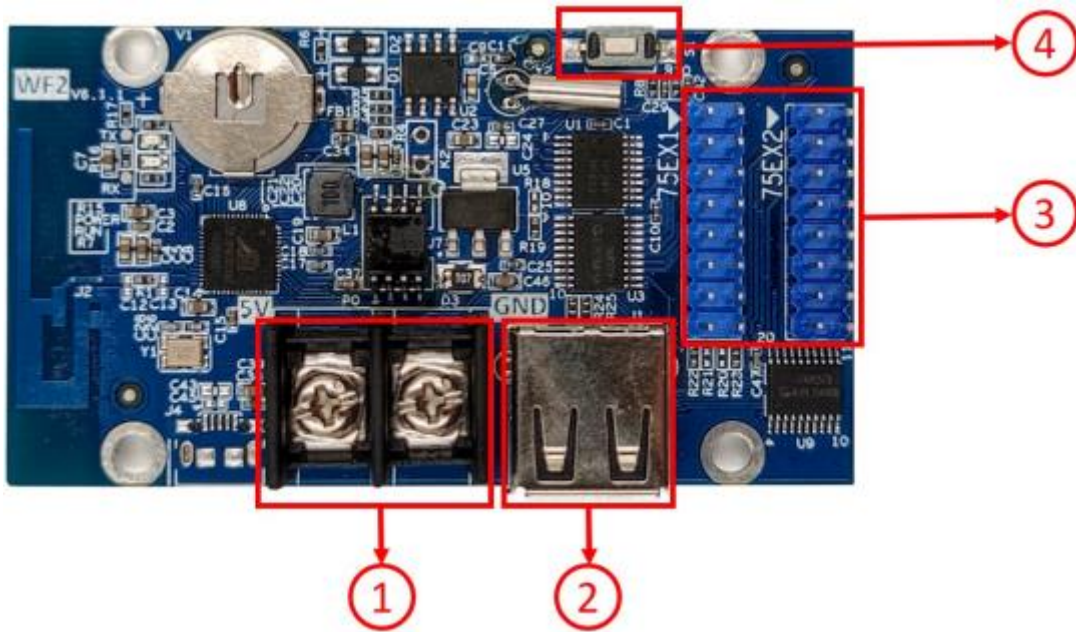
One HUB75E Port

RO	1	H U B 7 E	2	G0
BO	3		4	GND
R1	4		6	G1
B1	7		8	E
A	9		10	B
C	11		12	D
CLK	13		14	LATCH
OE	15		16	GND

4. Setup Diagram



5. Appearance Description



1. 5V Standard Power Connector, sharing with Micro-USB, can power to LED module directly.
2. USB Ports, for updating programs by U-disk.
3. HUB75E port for connecting to LED Display.
4. Test Key, for testing LED screen status.

6. Basic Parameters

Parameters	Minimum Value	Typical Value	Maximum Value
Rated voltage (V)	4.2	5.0	5.5
Storage temperature (°C)	-40	25	105
Work Environment Humidity (°C)	-40	25	80
Work Environment Humidity (%)	0.0	30	95

7. Precautions

- ✚ To ensure that the control card is stored during normal operation, make sure the battery on the control card is not loose;
- ✚ In order to ensure the long-term stable operation of the system; please try to use the standard 5V power supply voltage.

