



nevon Express™

## **PRODUCT SPECIFICATIONS**

**Tricolour Wi-Fi Control Card  
HD W60-75**

## 1. Overview

W60-75 support tri-colour Wi-Fi control card, update programs by Wi-Fi connected, it has USB port, can also using the U disk to update the program. Low cost, Cost-effective, simple software interface, easy to operate, better display information, good effect, supports variety kinds of single-color display. Application software : HD2018, LedArt.

## 2. Features

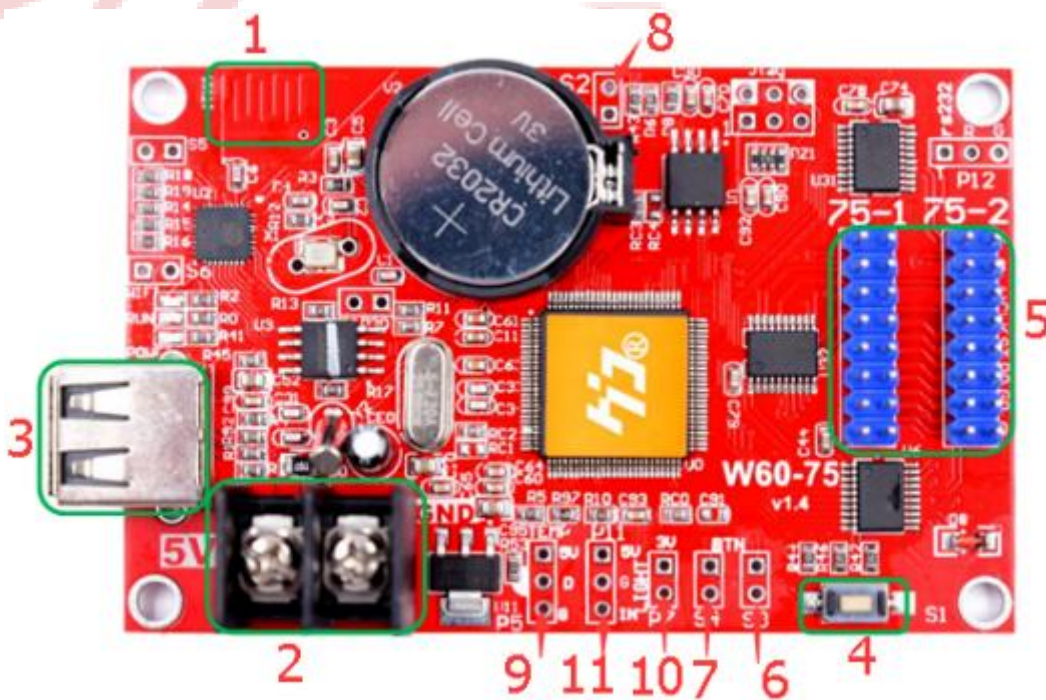
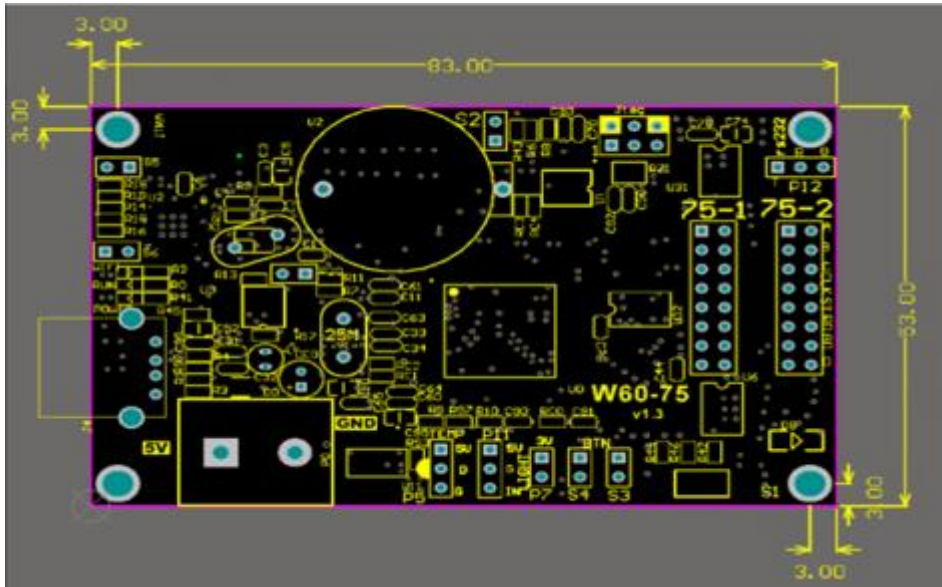
Functions	Description
<b>Support Module</b>	Single Colour/ Dual Colour /Tricolour conventional scanning methods
<b>Control Range</b>	Tricolour: 640*64
<b>FLASH Capacity</b>	8M Byte
<b>Communication Port</b>	U-Disk, Wi-Fi
<b>Support Colourful</b>	Full-colour module can display Red, Green, Blue, Yellow, Purple, White
<b>Program Quantity</b>	Max 1000pcs Programs. Can play by time section or control by buttons
<b>Area Quantity</b>	20 areas with separate zone, and separated special effects and border
<b>Display Showing</b>	Text, Picture, 3DText, Animation (SWF), Excel, Timing, Temperatures (humidity), Count, Lunar Calendar.
<b>Display</b>	Sequence display, button switch, remote control
<b>Display Effect</b>	<ol style="list-style-type: none"> <li>1. Text, Picture, Time, Timing , Temperature or temperature and humidity (external module required) Display</li> <li>2. Support program border, regional border settings, custom borders</li> <li>3. A variety of action display</li> <li>4. More than 40 kinds of text effects display</li> <li>5. Support for simple animations word</li> <li>6. Support outline fonts, stroke fonts and other settings</li> <li>7. Support for regional text background settings</li> <li>8. Support Excel form directly adding</li> </ol>
<b>Clock Function</b>	<ol style="list-style-type: none"> <li>1. Support Digital Clock/ Dial Clock / Lunar Time</li> </ol>

	<ul style="list-style-type: none"> <li>2. Countdown /Count up, Button Countdown / Count up</li> <li>3. The font, size, colour and position can be set freely</li> <li>4. Support multiple time zones</li> </ul>
<b>Extended Equipment</b>	Temperatures, Humidity, IR Remoter, Photosensitive sensors, etc.
<b>Automatic switch screen</b>	Support timer switch machine
<b>Dimming</b>	Support three brightness adjustment mode
<b>Wifi Password</b>	88888888

### 3. Port Definition

RO	1	H U B 7 5 E	2	G0
B0	3		4	GND
R1	4		6	G1
B1	7		8	E
A	9		10	B
C	11		12	D
CLK	13		14	LATCH
OE	15		16	GND

## 4. Setup Diagram



1. Connect the computer through Wi-Fi to send parameters and programs.
2. Power connector, connect 5V power supply.
3. USB ports, Updated program by U-disk.
4. Test button, click to switch screen test status.

5. 2 HUB75E, connect the display.
6. S3, Connect the point switch, switch the previous program, timer reset, count down.
7. S4, Connect the point switch, program control, timing pause, count reset.
8. S2, Connect the point switch, switch to the next program, the timer starts, count plus.
9. P5, Connect the temperature/humidity sensor.
10. P7, Connect the brightness sensor.
11. P11, Connect the IR, by remote control.

## 5. Basic Parameters

Parameters	Minimum Value	Typical Value	Maximum Value
Rated voltage (V)	4.2	5.0	5.5
Storage temperature (°C)	-40	25	105
Work Environment Humidity (°C)	-40	25	80
Work Environment Humidity (%)	0.0	30	95

## 6. Precautions

- ✚ To ensure that the control card is stored during normal operation, make sure the battery on the control card is not loose;
- ✚ In order to ensure the long-term stable operation of the system; please try to use the standard 5V power supply voltage.